

KEY PRODUCT CHARACTERISTICS			
SAFETY/COMPLIANCE	FIT/FUNCTION	TOTAL ON DRAWING	0
S/C CHECKPOINTS	F/F CHECKPOINTS	LAST NO. USED	0
NO. & TYPE	DESCRIPTION	RATIONALE	PTS. ZONE
-	-	-	-

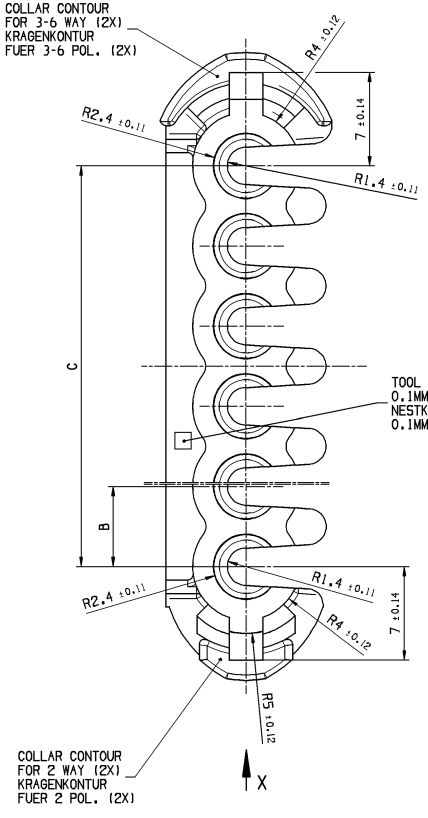
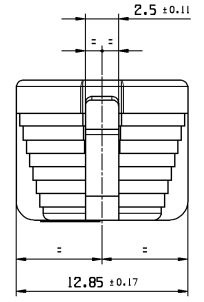
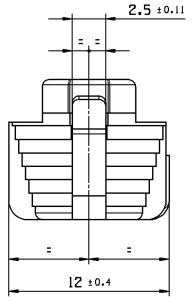
PART-NO. ID-NR.	PART-REV	DATE DATUM	CUSTOMER-NO. KUNDENNUMMER	MATERIAL WERKSTOFF	COLOR FARBE	RAL	NO. OF POLES POLLEKETT	A	B	C	FOR MALE CON. ID-NR.	FUER FLACH-SG. PART-NO.	FOR FEMALE CON. ID-NR.	FUER FLACH-SHG. PART-NO.
1533630 422741	01	05MR93	---	PA 6	BLACK SCHWARZ	9005	2	8± 0.14	6± 0.12	1x8=6± 0.12	417086	15316529	417086	15316529
12131347 420066	01	05MR93	---	PA 6	BLACK SCHWARZ	9005	3	14± 0.17	6± 0.12	2x8=12± 0.14	416965	12131195	691099	15414526
12147169 420074	01	05MR93	---	PA 6	BLACK SCHWARZ	9005	4	20± 0.2	6± 0.12	3x8=18± 0.2	417116	12147282	417132	15337220
15336378 420082	01	05MR93	---	PA 6	BLACK SCHWARZ	9005	5	26± 0.24	6± 0.12	4x8=24± 0.24	417366	10737799	417382	10737800
15336380 420091	01	05MR93	---	PA 6	BLACK SCHWARZ	9005	6	32± 0.28	6± 0.12	5x8=30± 0.28	417325	10737797	417340	10730443
10718133 402542	01	05MR93	---	PA 6	BLUE BLAU	5002	2	8± 0.14	6± 0.12	1x8=6± 0.12	417086	15316529	417108	10737794

DWG STATUS				REVISION HISTORY				AUTH	
DATE	ISTG/REV	NVP/CHG	ZONE	DATE	ISTG/REV	NVP/CHG	ZONE	DR	AP/VO
03FE92	00							P.WAN	R.WIS
05MR93	00	AA						P.WAN	R.WIS
05MR93	01							P.WAN	R.WIS
23N001	01	AA	69					F.WIC	R.WIS
23N001	01	AB	69					F.WIC	R.WIS
06AP06	R	01	AC					I/GAB	R.WIS

① MAX CABLE DIAMETER: 2.8 MM
MAXIMALER KABELDURCHMESSER: 2.8 MM

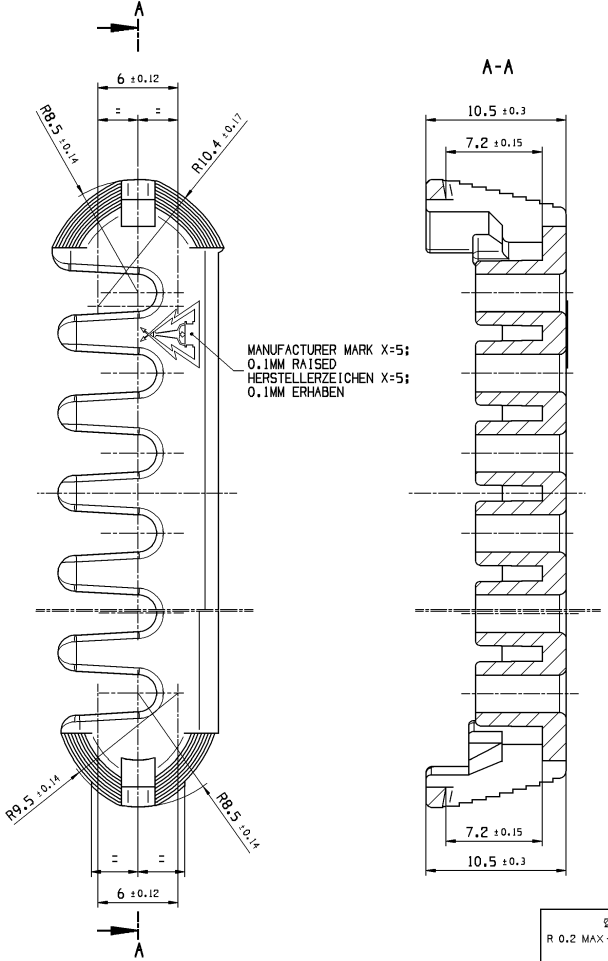
X COLLAR CONTOUR ON BOTH SIDES OF THE 2 WAY LOCKING
BEI BEIDSEITIGER KRAEKENKONTUR DER 2 POL. VERRIEGELUNG

X COLLAR CONTOUR ON BOTH SIDES OF THE 3-6 WAY LOCKING
BEI BEIDSEITIGER KRAEKENKONTUR DER 3-6 POL. VERRIEGELUNG



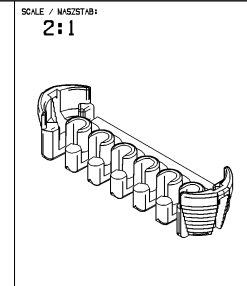
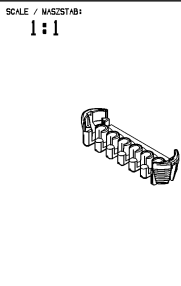
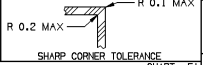
TOOL CAVITY NUMBER:
0.1MM RAISED
NESTKENNZEICHUNG:
0.1MM ERHABEN

COLLAR CONTOUR FOR 2 WAY (2X)
KRAEKENKONTUR FUER 2 POL. (2X)



MANUFACTURER MARK X=5;
0.1MM RAISED
HERSTELLERZEICHEN X=5;
0.1MM ERHABEN

A-A



DWG. TYP	CUSTOMER PART DRAWING	DISTR. CODE	D
VEIGHT (G)	1.84		
VOLUME (CM³)			
UNLESS OTHERWISE SPECIFIED			
GENERAL TOLERANCES ACCORDING TO:			
SEE CHART SIEHE TABELLE			
GD&T ACCORDING TO: ISO 1101			
ORIGINAL DESIGN: 6501.524 / K			
REFERENCE PART DRAWING			
FIRST ANGLE PROJECTION			
DO NOT SCALE			
USE MATH DATA			

DELPHI
DELPHI DEUTSCHLAND GMBH
9-42119 KUPPERTAL

THIS DRAWING IS THE PROPERTY OF DELPHI CORPORATION. NO RIGHTS ARE GRANTED TO USE THIS DRAWING FOR ANY PURPOSE OTHER THAN THE PURCHASING OF SERVICES AND SUPPLIES TO DELPHI CORPORATION.
DIESE ZEICHNUNG IST EIGENTUM VON DELPHI CORPORATION. ES IST NICHT BESTÄTTIGT, DIESE ZEICHNUNG FÜR ANDERE ZWECKE ALS FÜR DIE BEREITSTELLUNG VON DIENLEISTUNGEN UND WAREN AN DELPHI CORPORATION ZU NUTZEN.

DR	D. GAGOVIC	DATE	06AP06
AP/VO1	R. WISNIEWSKI		06AP06
AP/VO2	R. WISNIEWSKI		06AP06
AP/VO3			
AP/VO4			
AP/VO5			

SUBSTANCES OF CONCERN AND RECYCLED CONTENT PER DELPHI (1094001)
POTENTIELL BEWÄHRTE STOFFE UND REZYKLIERTEIL
(GEMÄSS DELPHI 1094001)

MATERIAL: SEE CHART / SIEHE TABELLE

DRAWING NAME: LOCKING CAP, PTS FOR GT 150
VERRIEGELUNGSKAPPE, PTS FUER GT 150

DRAWING NUMBER: 15414527

SIZE	SCALE	FRAME NO.	SHEET NO.	STG	REV	NVP
A1	5:1	1 OF 1	1 OF 1	1	R	01 AC

DIM TO CHECK	DIMENSIONAL RANGE (MM)	TOLERANCE UNLESS OTHERWISE SPECIFIED					
		FROM	TO	±0.15	±0.2	±0.3	±0.4
PRELIMINARY	0 - 20	> 20 - 30	> 30 - 70	> 70 - 100	> 100 - 150	> 150 - 200	> 200 - 250
DWG FOR HELP	20 - 30	30 - 70	70 - 100	100 - 150	150 - 200	200 - 250	250 - 400
THEORETIC DIM							
THEOR. WISSE							

DELPHI
D. - 9619 KUPPERTAL

CONTROLLED DOCUMENTS ARE ONLY AVAILABLE ON THE SERVER